

2014

СЗС «Vesta Park Конструкции»

www.vestapark.ru



VESTA PARK
GROUP OF COMPANIES

PRODUCTION OF STEEL STRUCTURES



From Ideas to Implementation!



ADVANCED PRODUCTION PROCESS:

Based on minimized labor costs thanks to the use of advanced hard- and software. Scrap ratio is minimized thanks to optimized metal cutting and utilization of commercial waste materials.

We employ technology rather than people.

A WIDE RANGE OF PRODUCTS AND SERVICES:

A wide range of steel structures used for construction of shopping centers, sports facilities, production and residential buildings and infrastructural facilities. Installation work.

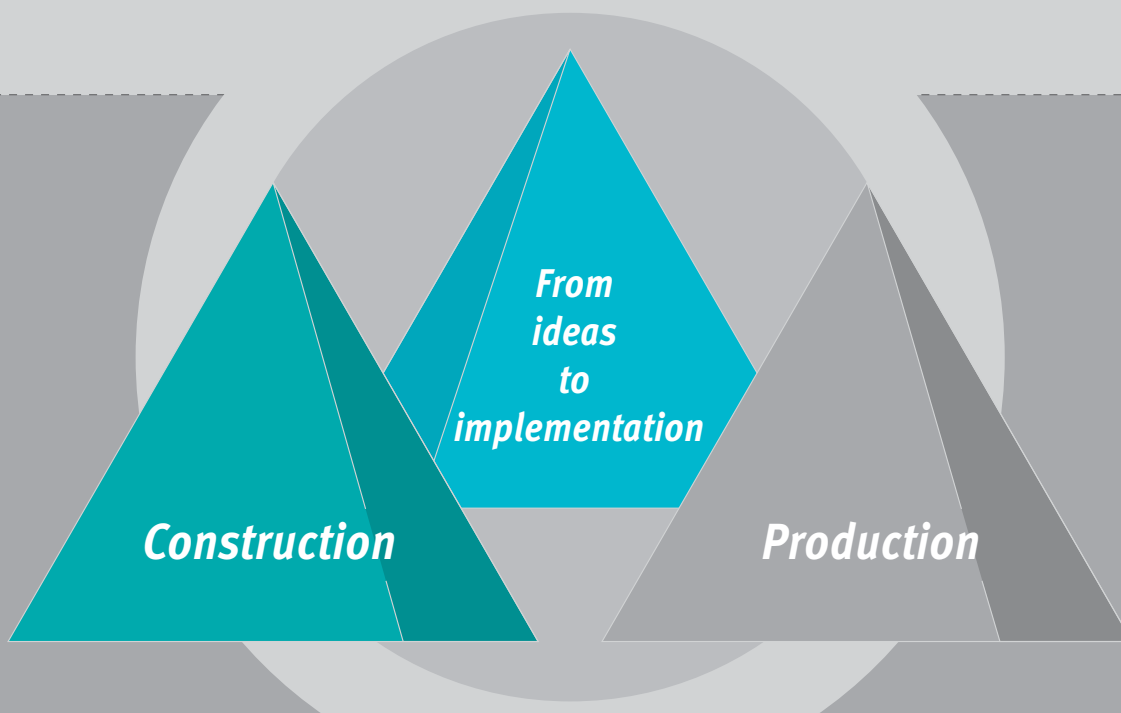
DESIGN CALCULATIONS:

Calculation and work drawings for all project stages will be submitted to customers.

TECHNICAL SUPPORT:

The team of professionals offers technical support of all projects at any stage, from design to installation.

VESTA PARK GROUP OF COMPANIES



Vesta Park has been present in the Russian market of construction material production since 2003. In 2007, **Vest Park Group of Companies** was established; it is specialized in construction of industrial, power generation and storage facilities.

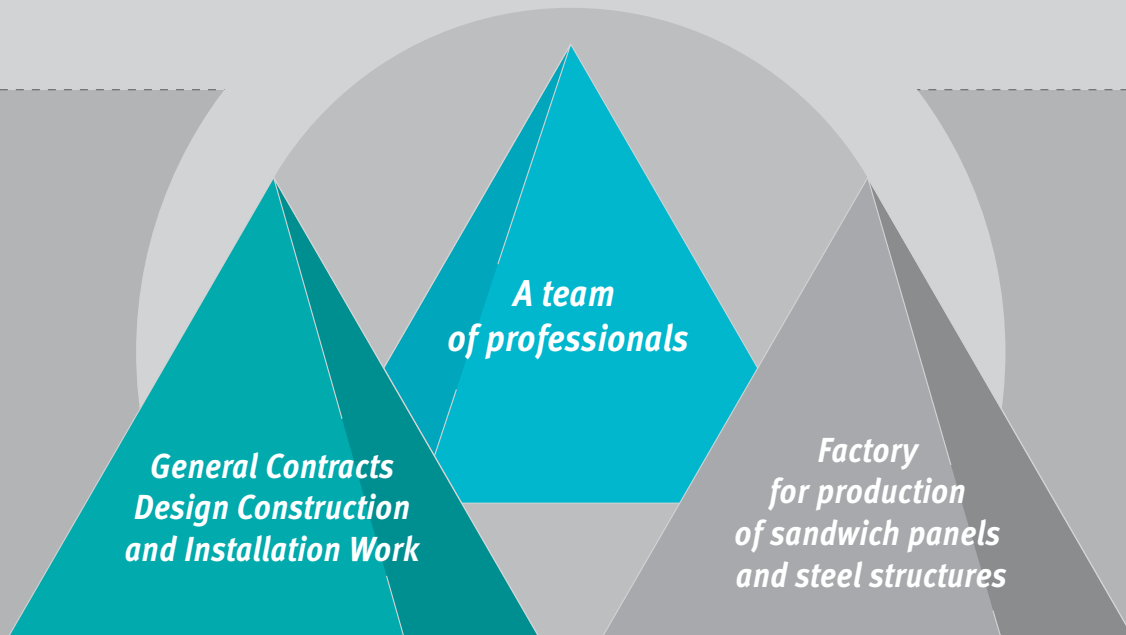
- ▲ The Group includes: a general contracting agency, a design workshop and factories producing sandwich panels and steel structures.
- ▲ Management of Vest Park Group of Companies complies with the European standards set forth in the certificate of GOST R ISO 9001 -2008 (ISO 9001:2008).
- ▲ Specialty products are subjected to close inspection at each production stage.

ADVANTAGES OF VESTA PARK:

- Availability of the company's own certified facilities for production of steel structures and sandwich panels
- Project management starting from an idea till complete implementation and putting into operation
- Application of state-of-the-art design and building processes
- Project optimization and minimization of construction timelines, resulting in substantial cost saving and higher investment attractiveness of project as a whole
- Long-term and well-established links with material suppliers
- Compliance with the ISO international quality standards
- Availability of the company's own production facilities and technical assets

The Group of Companies has been certified to supply products and carry out jobs at power generation and nuclear power facilities as well as at cultural heritage objects.

VESTA PARK GROUP OF COMPANIES



COMPANY RESOURCES:

- 1 The management of GC Vesta Park has been certified in accordance with the European standard ISO 9001:2008.
- 2 The production personnel of the company have been certified in accordance with the effective legislation in the field of industrial safety, standards and rules of construction and installation work.
- 3 Vesta Park is a full member of SRO (selfregulated organization) of designers Stroi-Proyekt, SRO Stroitelniy Resurs; it holds a license of the Ministry of Culture for performance of operations aimed at preservation of cultural heritage objects of the people of the Russian Federation.
- 4 Automatic production ensures stable and high quality of 100% of finished products.
- 5 Factories for production of fencing and steel structures are among the most prominent ones in the territories of the RF.
- 6 The main production facilities of the steel structures factory are fitted out with the equipment by Kaltenbach – the industry’s indisputable technology leader.
- 7 The total number of staff, engineering and technical personnel is 540 people.

CJSC «VESTA PARK KONSTRUKTSII»

CJSC 'Vesta Park Konstruktsii' is specialized in the production of steel structures for a wide range of construction applications. Production processes enable use to manufacture building with unlimited bay length, single- and multi-bay buildings of varying height, without and with cranes of the capacity that is required for customers.



Our production outputs:

2,000 t of structures per month,
24,000 t of structures per month.

Advantages of CJSC 'Vesta Park Konstruktsii':

- ▲ *Automatic, high precision production facilities of the factory are capable of producing steel structures in automatic mode, 24 hours per day, 7 days per week.*
- ▲ *Automatic production ensures stable and high quality of 100% of steel structures we make.*
- ▲ *Production capacity of the personnel of 'Vesta Park Konstruktsii' is 50% higher than the similar parameter of other Russian companies, and is comparable with Western counterparts.*
- ▲ *The design bureau has the most advanced software Tekla Structures. This building information modeling (BIM) software can create detailed 3D design models of buildings and structures of any complexity.*

These advantages ensure the industry's best parameters in terms of prime cost combined with shorter lead-times and guaranteed high and stable quality.

We employ technology rather than people!



EQUIPMENT



The production process at our factory is based on high precision equipment arranged into one production chain. Directed transportation flows run strictly parallel to each other and meet, without crossing each other, at the batching line, where parts are collected according to grades, and then proceed to the assembly and welding line. Thanks to process automation, personnel involvement is minimized, and high production quality as well as high production output are ensured.



Shot-blasting machine SPRINT 1504:

Shot-blasting machine SPRINT 1504B is at the very beginning of the production process, where it machines surfaces up to BSa2 ½ finish. This finish meets all the international standards and enables us afterwards to use any painting system, without any additional surface preparation.



Band Saw KBS1051DG+:

Band saw KBS1051DG + 3-axis drilling machine KDM1015: this machining complex can carry out high precision cutting of rolled profiles combined with drilling, which is possible simultaneously on 3 sides with drills of various diameters, from 6 mm to 40 mm. As a result, there is no offset of the inter-axial distance of holes with relation to each other and to the edge of the part.



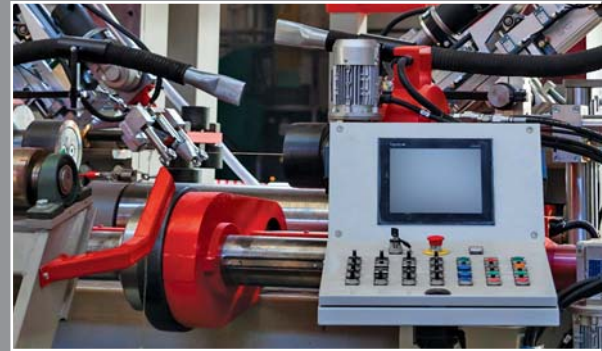
Sheet metal machining center KF1606:

Sheet metal machining center KF1606 combines a number of operations such as plasma cutting, gas cutting, drilling, milling and marking, which improves considerably its production capacity and ensures high accuracy of the operations, since one reference point is used for all machining types. For example, in case of making flanges with a large group of holes, even the slightest offset of holes with relation to each other are avoided, which has a positive impact later on, during assembly of steel structures. The maximum drilling diameter is 40 mm, but in case a hole is needed with a larger diameter or of a special shape, this hole is made by means of milling.

EQUIPMENT

Beam welding line Corimpex:

Beam welding line Corimpex. The machine can weld beams with beam wall up to 2,500 mm, thickness up to 30 mm, flange width up to 1,000 mm, thickness up to 50 mm; it ensures complete penetration without beveling up to 16 mm. The system of feed and aligning rolls ensures highly accurate positioning of the beam wall with relation to the flange, and besides, flange camber is improved in the course of welding. The transporters are long enough to produce max. 15,000 mm long beams.



Along with the conventional machines used at most steel structures factories, the advanced equipment of 'Vesta Park Konstruktsii' makes us one of the few producers of beams with varying cross section, with rare parameters that are used, inter alia, for **bridge construction**.



Technical data:

- cross section ranging from 300 mm to 2,500 mm
- beam wall height up to 2,500 mm, wall thickness up to 30 mm
- flange width up to 1,000 mm, thickness up to 50 mm, drilling up to 40 mm.



COMPLETED PROJECTS



*General contract,
Supply and installation:
Sandwich panels 20,000 sq.m,
Steel structures 1,163 t*

*Tikhvin Wagon Building Plant, Shops Nos.56, 58,
Tikhvin, Leningrad Region (2010 -2011)*



*Building construction, total area – 7,563 sq.m
Construction and installation work
Supply and installation:
Sandwich panels 10,800 sq.m,
Steel structures 656 t*

*Kaskadnaya Substation, ПС 500 GIS building 220
kW, КРУЭ 500 kW, main transformer building AT1,
AT2, transformer building T5, T7, autotransformer
building T6, T8, Moscow, (2010 - 2012)*

COMPLETED PROJECTS



TPP-12, GIS building and construction of the main building, Moscow, (2012 - 2014)

*Construction of GIS building, total area – 1,285 sq.m;
main building, total area – 7,169 sq.m
Supply and installation:
Sandwich panels 17,000 sq.m,
Steel structures 1,032 t*



TPP-20 construction of the main building, Moscow, (2013-2014)

*Construction of the main building,
total area – 7,200 sq.m
Supply and installation:
Sandwich panels 12,000 sq.m,
Steel structures 1 180 t*

COMPLETED PROJECTS



*Construction and installation work of the main load-bearing framework of the main building, total area – 7,707 sq.m
Supply and installation:
Sandwich panels 12,000 sq.m,
Steel structures 3190 t*

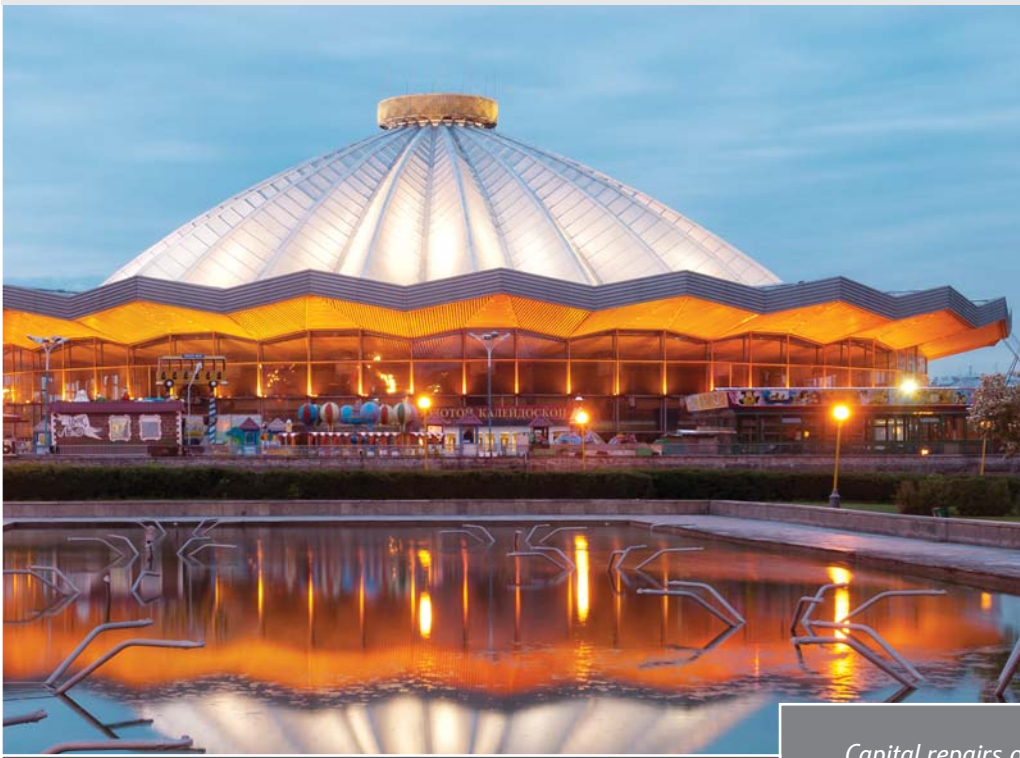
*Novogor'kovskaya TPP, Nizhni Novgorod Region,
Kstovo (2013)*



*Supply of sandwich panels 20,000 sq.m,
Steel structures, over 300 t*

Novovoronezhskaya NPP-2, Novovoronezh (2010)

COMPLETED PROJECTS



Building of the Big Moscow Circus in Vernadski Avenue, Moscow, (2014)



*Capital repairs of the administrative and actors' modules (stylobate) total area 10,500 sq.m
The work is performed within the framework of the program of the Ministry of Culture of the RF.*



Building of the State Musical Theater of National Arts directed by Vladimir Nazarov (2014)



General contract for capital repairs of the building. Revamping of the acoustic and philharmonic rooms, including supply and installation of special acoustic, sound, stage and illumination equipment.

COMPLETED PROJECTS



Supply of sandwich panels, over 200,000 sq.m

*Production and storage facilities 'Atlant-Park',
Obukhovo Settlement, Noginsk District, Moscow
Region (2011 -2014)*



Supply of sandwich panels 21,000 sq.m

*Production and storage facilities (Site No.6, 58th
km of Moscow-N.Novgorod Highway, Noginsk
District, Moscow Region), (2014)*

COMPLETED PROJECTS



Multifunctional administrative, shopping and production and storage facilities at the plot of land, LIGA, LLC (near Padikovo Village, Obushkovskoye Rural Settlement, Itsra District, Moscow Region), (2014)



Supply of sandwich panels 30,000 sq.m



Industrial park 'A-Plus Park Alabuga', (SEZ 'Alabuga', Sh-2 St., Build. 4/1, PO box 162, Elabuga), (2014)



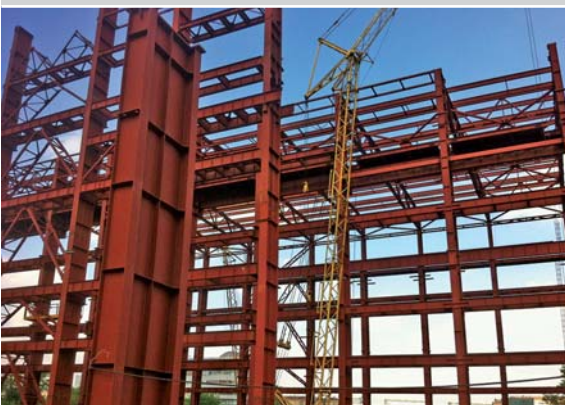
Supply of sandwich panels 14,000 sq.m

COMPLETED PROJECTS



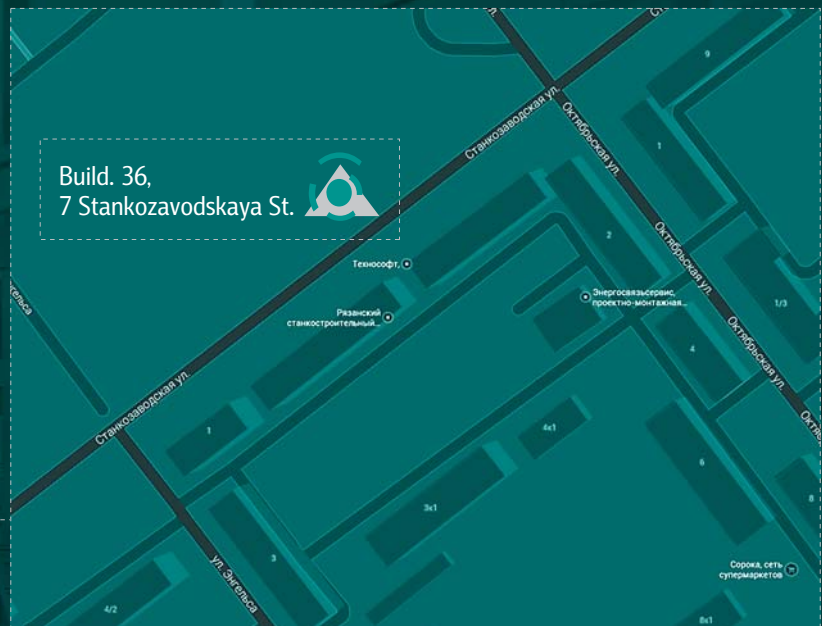
Supply of sandwich panels 18,000 sq.m

*Sales and distribution facility of 'ETM' Company,
Plot No.356, Lensovetovskoye Enterprise,
Shushary, Saint-Petersburg, (2014)*



*Supply of sandwich panels 24,000 sq.m,
Steel structures 230 t*

TPP-16, Moscow, (2012 -2013)



MODERN PRODUCTION PROCESS:

Based on minimized labor costs thanks to the use of advanced hard- and software. Scrap ratio is minimized thanks to optimized metal cutting and utilization of commercial waste materials.

DESIGN CALCULATIONS:

Calculation and work drawings for all project stages will be submitted to customers.

A WIDE RANGE OF PRODUCTS AND SERVICES:

A wide range of steel structures used for construction of shopping centers, sports facilities, production and residential buildings and infrastructural facilities. Installation work.

TECHNICAL SUPPORT:

The team of professionals offers technical support of all projects at any stage, from design to installation.



VESTA PARK
GROUP OF COMPANIES

Address of the headquarters:

Build.1, 27a 2nd Yuzhnoportoviy Drive, Moscow,
115432, Business Center 'Yuzhny Port'

tel.: +7 (495) 258-99-87

fax: +7 (495) 258-99-86

e-mail: vestapark@vestapark.ru

Production site of steel structures:

Build.36, 7 Stankozavodskaya St., Ryazan, 390042

tel.: +7 (4912) 99-89-08

e-mail: vestaparkmk@vestapark.ru

www.vestapark.ru